

Summary

This Profile provide an overview of Water, Sanitation & Hygiene (WASH) infrastructure within CAMP in Ukhia, Cox's Bazar. The GPS datasets was collected from partners upto May 08, 2018.

04590180

m

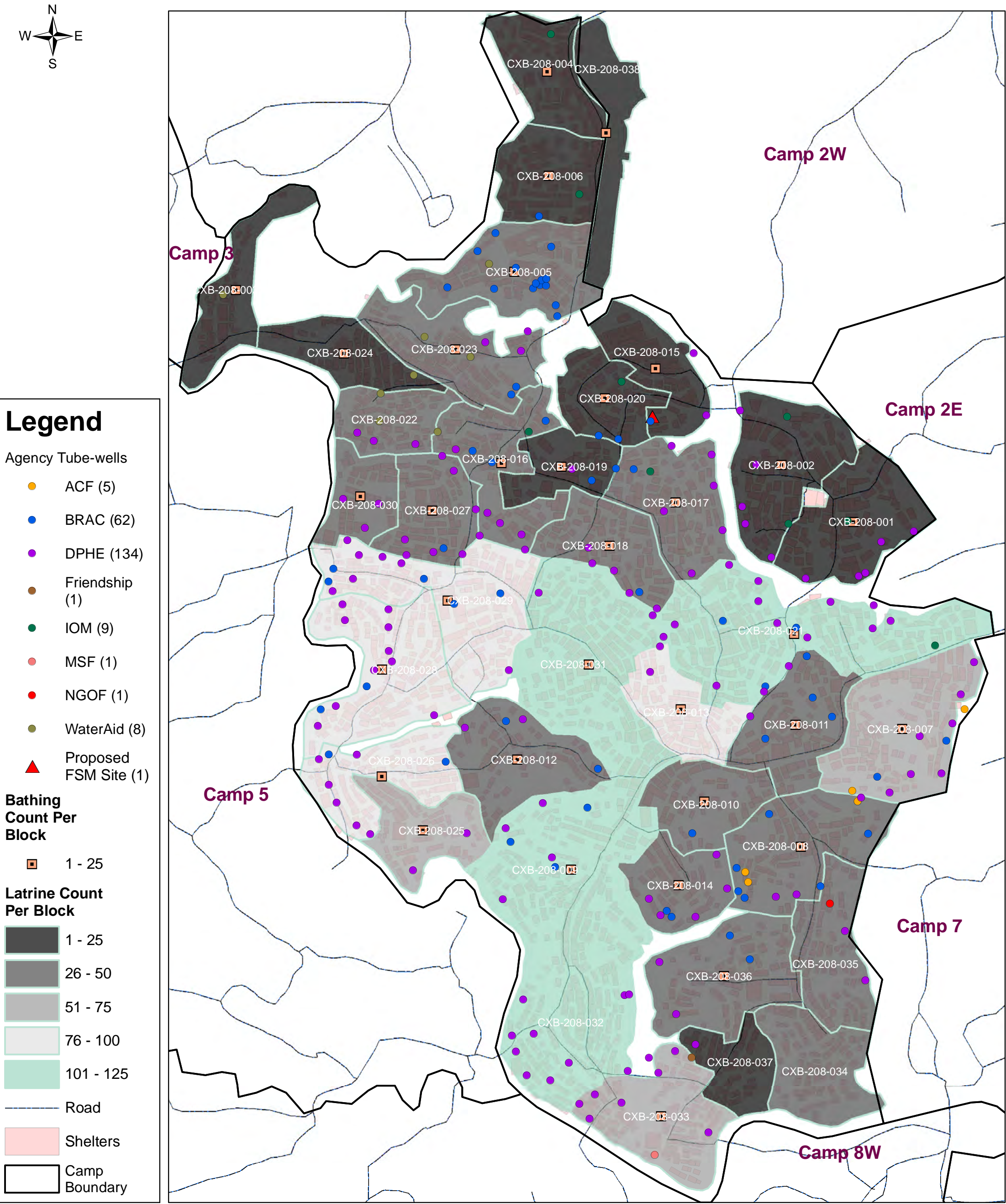
Camp Overview

# of Majhee Blocks38

# of Majhee Blocks Households5,946

# of Majhee Blocks Population26,814

Location Map



Sl No	Block ID	Total Population	# TW Required	# TW Available	# TW GAP	# LT Required	# LT Available	# LT GAP	# Bathing Required	# Bathing Available	# Bathing GAP
1	CXB-208-001	780	3	6		39	16	23	16	4	12
2	CXB-208-002	760	3	6		38	13	25	15	4	11
3	CXB-208-003	328	1	1	0	16	25		7	6	1
4	CXB-208-004	499	2	1	1	25	22	3	10	2	8
5	CXB-208-005	954	4	15		48	35	13	19	9	10
6	CXB-208-006	647	3	2	1	32	17	15	13	6	7
7	CXB-208-007	569	2	10		28	60		11	2	9
8	CXB-208-008	750	3	12		38	45		15	1	14
9	CXB-208-009	1060	4	7		53	103		21	15	6
10	CXB-208-010	541	2	1	1	27	47		11	2	9
11	CXB-208-011	379	2	7		19	28		8	6	2
12	CXB-208-012	967	4	4	0	48	49		19	8	11
13	CXB-208-013	650	3	2	1	33	80		13	6	7
14	CXB-208-014	450	2	7		23	42		9	1	8
15	CXB-208-015	623	2	2	0	31	19	12	12	1	11
16	CXB-208-016	550	2	11		28	41		11	5	6
17	CXB-208-017	525	2	7		26	35		11	10	1
18	CXB-208-018	550	2	6		28	31		11	8	3
19	CXB-208-019	625	3	3		31	16	15	13	7	6
20	CXB-208-020	680	3	3	0	34	23	11	14	6	8
21	CXB-208-021	1011	4	14		51	104		20	14	6
22	CXB-208-022	819	3	5		41	26	15	16	0	16
23	CXB-208-023	674	3	6		34	36		13	2	11
24	CXB-208-024	511	2	1	1	26	22	4	10	1	9
25	CXB-208-025	438	2	2	0	22	51		9	5	4
26	CXB-208-026	527	2	8		26	79		11	5	6
27	CXB-208-027	776	3	7		39	32	7	16	2	14
28	CXB-208-028	1112	4	12		56	83		22	12	10
29	CXB-208-029	1040	4	13		52	100		21	10	11
30	CXB-208-030	590	2	3		30	33		12	2	10
31	CXB-208-031	1855	7	3	4	93	118		37	13	24
32	CXB-208-032	1300	5	10		65	107		26	0	26
33	CXB-208-033	547	2	9		27	54		11	3	8
34	CXB-208-034	430	2	0	2	22	42		9	0	9
35	CXB-208-035	552	2	3		28	40		11	0	11
36	CXB-208-036	615	2	4		31	49		12	3	9
37	CXB-208-037	463	2	1	1	23	23	0	9	0	9
38	CXB-208-038	667	3	2	1	33	21	12	13	2	11
	Out of Blocks			7			55			8	
Camp 6		26814	107	223	12	1341	1822	155	536	191	353

**Standard:** 1:250 People for Tube-well, 1:20 People for Latrine, 1:50 People for Bathing



Summary

This Profile provide an overview of Water, Sanitation & Hygiene (WASH) infrastructure within CAMP in Ukhia, Cox's Bazar. The GPS datasets was collected from partners upto May 08, 2018.

080160320

m

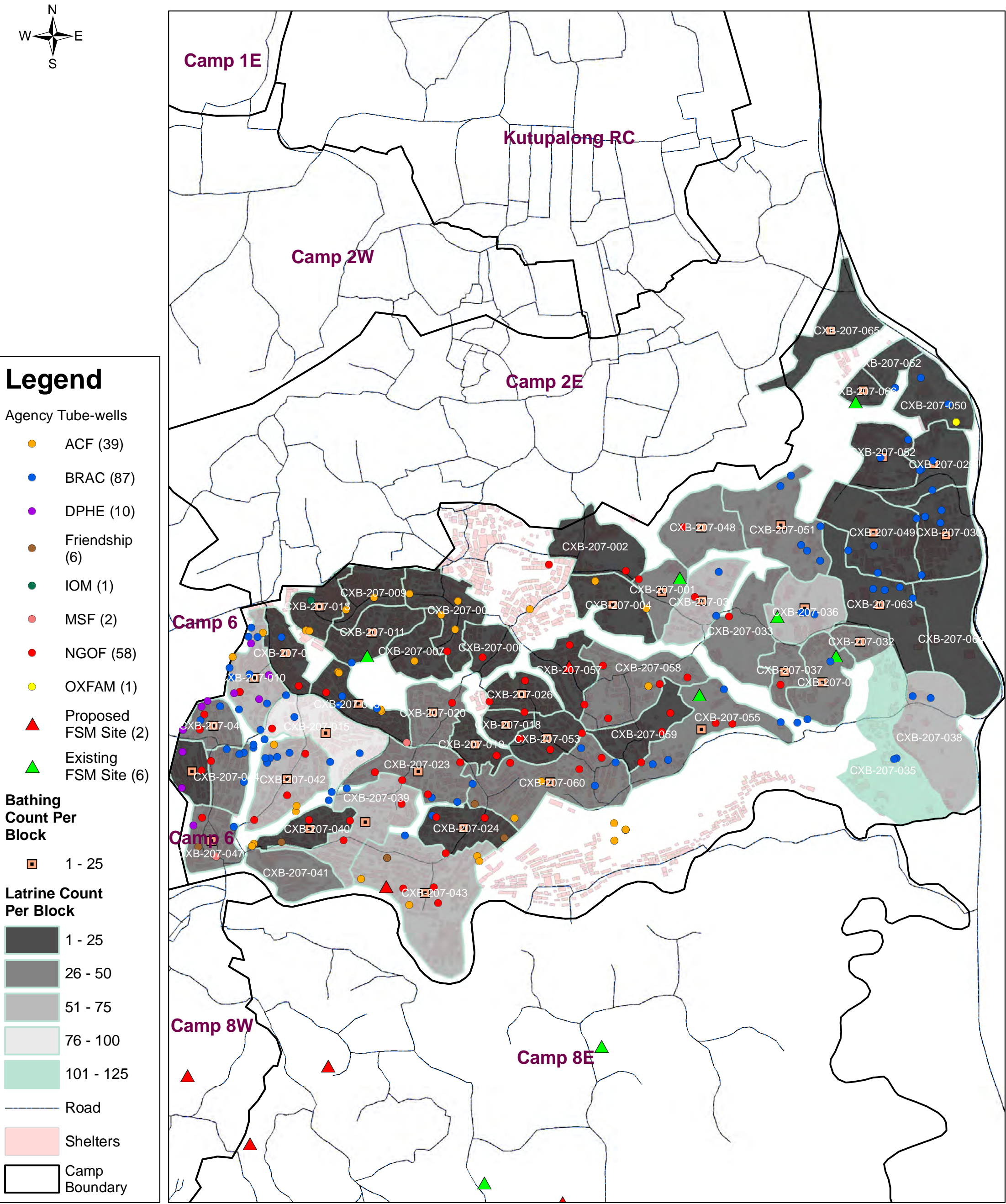
Camp Overview

# of Majhee Blocks60

# of Majhee Blocks Households9,377

# of Majhee Blocks Population39,784

Location Map



Sl No	Block ID	Total Population	# TW Required	# TW Available	# TW GAP	# LT Required	# LT Available	# LT GAP	# Bathing Required	# Bathing Available	# Bathing GAP
1	CXB-207-001	498	2	2	0	25	37		10	5	5
2	CXB-207-002	805	3	1	2	40	7	33	16	0	16
3	CXB-207-003	458	2	1	1	23	0	23	9	0	9
4	CXB-207-004	689	3	1	2	34	18	16	14	1	13
5	CXB-207-005	380	2	0	2	19	0	19	8	0	8
6	CXB-207-006	415	2	1	1	21	11	10	8	0	8
7	CXB-207-007	707	3	1	2	35	2	33	14	0	14
8	CXB-207-008	640	3	5		32	4	28	13	0	13
9	CXB-207-009	900	4	2	2	45	3	42	18	0	18
10	CXB-207-010	500	2	16		25	69		10	6	4
11	CXB-207-011	470	2	1	1	24	10	14	9	2	7
12	CXB-207-013	525	2	3		26	6	20	11	2	9
13	CXB-207-014	544	2	2	0	27	12	15	11	1	10
14	CXB-207-015	910	4	5		46	100		18	5	13
15	CXB-207-016	435	2	7		22	20	2	9	2	7
16	CXB-207-018	500	2	0	2	25	16	9	10	4	6
17	CXB-207-019	477	2	1	1	24	16	8	10	2	8
18	CXB-207-020	780	3	1	2	39	33	6	16	5	11
19	CXB-207-023	945	4	7		47	27	20	19	5	14
20	CXB-207-024	935	4	5		47	14	33	19	2	17
21	CXB-207-026	545	2	3		27	17	10	11	2	9
22	CXB-207-027	571	2	1	1	29	0	29	11	0	11
23	CXB-207-028	397	2	0	2	20	0	20	8	0	8
24	CXB-207-029	510	2	4		26	12	14	10	6	4
25	CXB-207-030	883	4	4	0	44	21	23	18	1	17
26	CXB-207-031	566	2	3		28	72		11	1	10
27	CXB-207-032	264	1	0	1	13	32		5	2	3
28	CXB-207-033	755	3	1	2	38	43		15	0	15
29	CXB-207-034	621	2	1	1	31	45		12	9	3
30	CXB-207-035	775	3	2	1	39	101		16	0	16
31	CXB-207-036	782	3	3	0	39	64		16	5	11
32	CXB-207-037	320	1	1	0	16	41		6	2	4
33	CXB-207-038	1049	4	2	2	52	64		21	0	21
34	CXB-207-039	850	3	2	1	43	55		17	7	10
35	CXB-207-040	351	1	3		18	16	2	7	1	6
36	CXB-207-041	559	2	1	1	28	32		11	0	11
37	CXB-207-042	899	4	10		45	72		18	4	14
38	CXB-207-043	1534	6	9		77	62	15	31	6	25
39	CXB-207-044	490	2	5		25	42		10	0	10
40	CXB-207-045	498	2	3		25	10	15	10	1	9
41	CXB-207-046	515	2	7		26	30		10	3	7
42	CXB-207-047	500	2	5		25	45		10	4	6
43	CXB-207-048	876	4	1	3	44	35	9	18	8	10
44	CXB-207-049	457	2	4		23	12	11	9	4	5
45	CXB-207-050	728	3	3	0	36	1	35	15	0	15
46	CXB-207-051	1690	7	6	1	85	31	54	34	14	20
47	CXB-207-052	750	3	2	1	38	15	23	15	3	12
48	CXB-207-053	560	2	2	0	28	19	9	11	2	9
49	CXB-207-055	380	2	7		19	44		8	5	3
50	CXB-207-057	681	3	2	1	34	21	13	14	0	14
51	CXB-207-058	748	3	6		37	46		15	0	15
52	CXB-207-059	737	3	2	1	37	21	16	15	0	15

**Standard:** 1:250 People for Tube-well, 1:20 People for Latrine, 1:50 People for Bathing



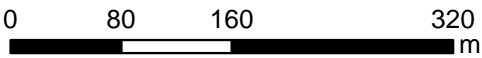
Sl No	Block ID	Total Population	# TW Required	# TW Available	# TW GAP	# LT Required	# LT Available	# LT GAP	# Bathing Required	# Bathing Available	# Bathing GAP
53	CXB-207-060	550	2	10		28	40		11	5	6
54	CXB-207-061	768	3	0	3	38	0	38	15	0	15
55	CXB-207-062	784	3	0	3	39	5	34	16	0	16
56	CXB-207-063	833	3	4		42	9	33	17	4	13
57	CXB-207-064	953	4	0	4	48	4	44	19	0	19
58	CXB-207-065	763	3	0	3	38	4	34	15	6	9
59	CXB-207-066	286	1	0	1	14	1	13	6	2	4
60	CXB-207-067	493	2	0	2	25	0	25	10	0	10
	Out of Blocks			23			234			24	
Camp 7		39784	159	204	52	1989	1823	848	796	173	647

# WASH Sector Camp 8E Profile

Ukhia, Cox's Bazar, Bangladesh (May 8, 2018)

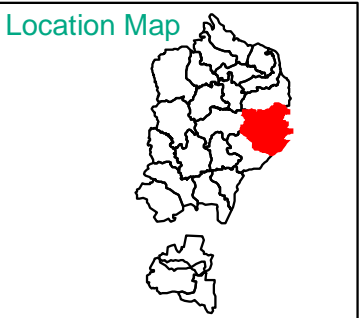
## Summary

This Profile provide an overview of Water, Sanitation & Hygiene (WASH) infrastructure within CAMP in Ukhia, Cox's Bazar. The GPS datasets was collected from partners upto May 08, 2018.



## Camp Overview

# of Majhee Blocks	77
# of Majhee Blocks Households	8,063
# of Majhee Blocks Population	34,075



### Legend

Agency Tube-wells

- ACF (7)
- Agrajattra (1)
- BRAC (38)
- DPHE (76)
- Friendship (4)
- MSF (18)
- OXFAM (4)
- VERC (10)
- WVI (3)
- Proposed FSM Site (3)
- Existing FSM Site (2)

Bathing Count Per Block

- 1 - 25
- 26 - 50

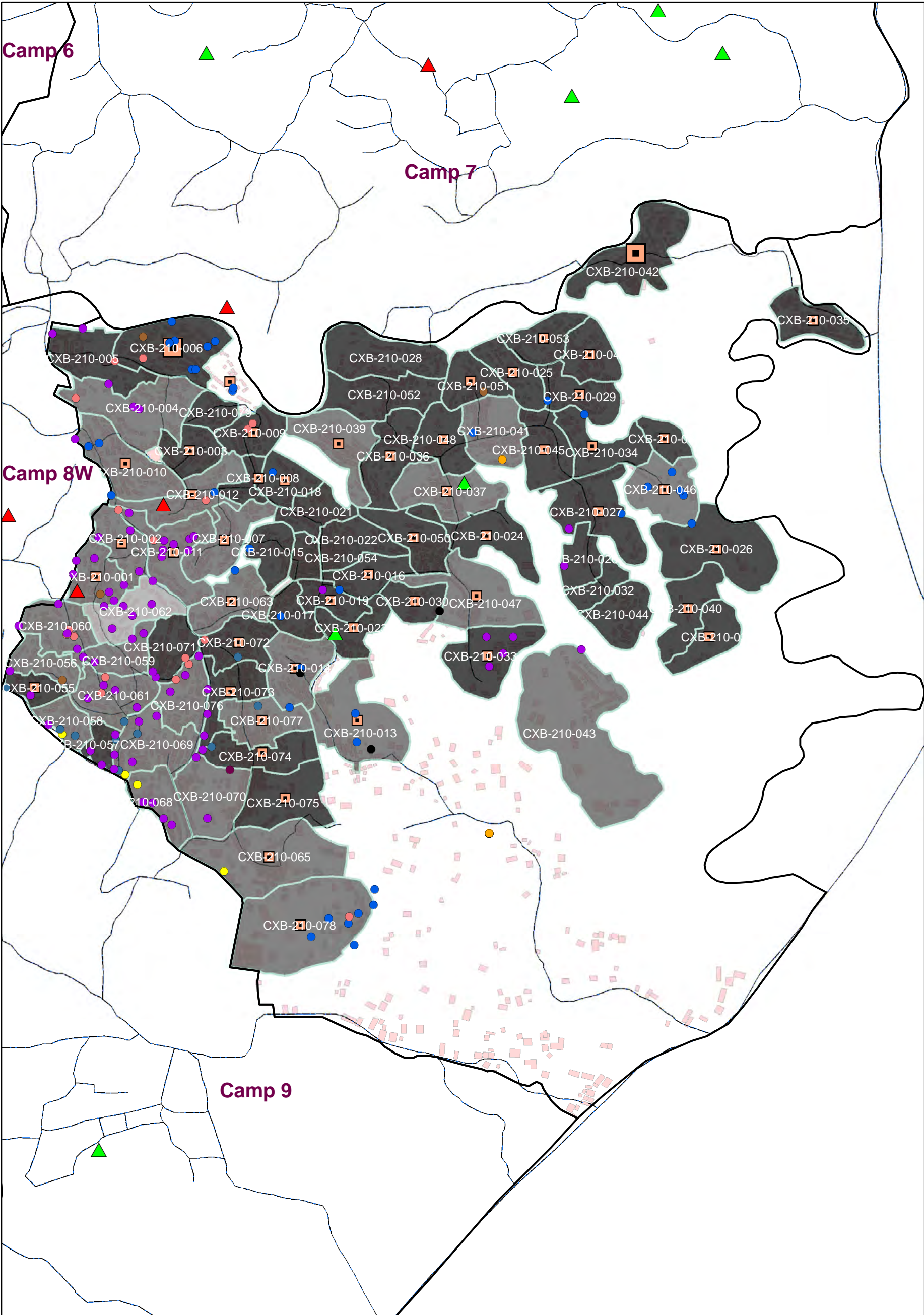
Latrine Count Per Block

- 1 - 25
- 26 - 50
- 51 - 75

Road

Shelters

Camp Boundary



Sl No	Block ID	Total Population	# TW Required	# TW Available	# TW GAP	# LT Required	# LT Available	# LT GAP	# Bathing Required	# Bathing Available	# Bathing GAP
1	CXB-210-001	455	2	6		23	38		9	4	5
2	CXB-210-002	344	1	3		17	31		7	1	6
3	CXB-210-003	481	2	0	2	24	22	2	10	2	8
4	CXB-210-004	472	2	4		24	40		9	0	9
5	CXB-210-005	316	1	2		16	16	0	6	0	6
6	CXB-210-006	608	2	9		30	21	9	12	27	
7	CXB-210-007	469	2	1	1	23	28		9	3	6
8	CXB-210-008	352	1	1	0	18	19		7	5	2
9	CXB-210-009	335	1	2		17	1	16	7	2	5
10	CXB-210-010	409	2	3		20	28		8	5	3
11	CXB-210-011	480	2	9		24	31		10	5	5
12	CXB-210-012	480	2	3		24	37		10	5	5
13	CXB-210-013	536	2	3		27	36		11	3	8
14	CXB-210-014	470	2	2	0	24	36		9	5	4
15	CXB-210-015	416	2	1	1	21	12	9	8	0	8
16	CXB-210-016	375	2	1	1	19	16	3	8	5	3
17	CXB-210-017	422	2	1	1	21	9	12	8	0	8
18	CXB-210-018	380	2	0	2	19	10	9	8	2	6
19	CXB-210-019	375	2	1	1	19	15	4	8	2	6
20	CXB-210-020	487	2	1	1	24	15	9	10	0	10
21	CXB-210-021	535	2	0	2	27	18	9	11	0	11
22	CXB-210-022	441	2	0	2	22	19	3	9	0	9
23	CXB-210-023	303	1	0	1	15	19		6	5	1
24	CXB-210-024	385	2	0	2	19	21		8	6	2
25	CXB-210-025	413	2	0	2	21	23		8	5	3
26	CXB-210-026	428	2	0	2	21	9	12	9	4	5
27	CXB-210-027	725	3	2	1	36	25	11	15	10	5
28	CXB-210-028	589	2	0	2	29	14	15	12	0	12
29	CXB-210-029	380	2	2	0	19	22		8	1	7
30	CXB-210-030	380	2	0	2	19	16	3	8	2	6
31	CXB-210-031	267	1	0	1	13	8	5	5	1	4
32	CXB-210-032	371	1	0	1	19	6	13	7	0	7
33	CXB-210-033	479	2	5		24	20	4	10	2	8
34	CXB-210-034	262	1	0	1	13	23		5	14	
35	CXB-210-035	512	2	0	2	26	18	8	10	13	
36	CXB-210-036	535	2	0	2	27	23	4	11	2	9
37	CXB-210-037	438	2	0	2	22	28		9	3	6
38	CXB-210-038	389	2	0	2	19	8	11	8	15	
39	CXB-210-039	465	2	0	2	23	44		9	4	5
40	CXB-210-040	375	2	0	2	19	18	1	8	6	2
41	CXB-210-041	617	2	2	0	31	46		12	0	12
42	CXB-210-042	590	2	0	2	30	16	14	12	33	
43	CXB-210-043	441	2	0	2	22	38		9	0	9
44	CXB-210-044	609	2	0	2	30	12	18	12	0	12
45	CXB-210-045	602	2	0	2	30	17	13	12	1	11
46	CXB-210-046	425	2	5		21	46		9	3	6
47	CXB-210-047	425	2	1	1	21	32		9	1	8
48	CXB-210-048	532	2	0	2	27	21	6	11	3	8
49	CXB-210-049	470	2	0	2	24	21	3	9	3	6
50	CXB-210-050	430	2	0	2	22	16	6	9	2	7
51	CXB-210-051	372	1	1	0	19	22		7	8	
52	CXB-210-052	582	2	0	2	29	24	5	12	0	12
53	CXB-210-053	419	2	0	2	21	25		8	5	3

**Standard:** 1:250 People for Tube-well, 1:20 People for Latrine, 1:50 People for Bathing

SI No	Block ID	Total Population	# TW Required	# TW Available	# TW GAP	# LT Required	# LT Available	# LT GAP	# Bathing Required	# Bathing Available	# Bathing GAP
54	CXB-210-054	273	1	0	1	14	8	6	5	0	5
55	CXB-210-055	351	1	2		18	16	2	7	1	6
56	CXB-210-056	410	2	1	1	21	31		8	0	8
57	CXB-210-057	356	1	5		18	9	9	7	0	7
58	CXB-210-058	378	2	3		19	35		8	0	8
59	CXB-210-059	442	2	4		22	35		9	0	9
60	CXB-210-060	396	2	7		20	26		8	0	8
61	CXB-210-061	415	2	7		21	44		8	0	8
62	CXB-210-062	430	2	6		22	63		9	0	9
63	CXB-210-063	566	2	1	1	28	38		11	1	10
64	CXB-210-065	728	3	1	2	36	48		15	4	11
65	CXB-210-068	387	2	5		19	28		8	0	8
66	CXB-210-069	415	2	7		21	36		8	0	8
67	CXB-210-070	419	2	3		21	32		8	0	8
68	CXB-210-071	381	2	3		19	15	4	8	0	8
69	CXB-210-072	388	2	2	0	19	19	0	8	5	3
70	CXB-210-073	303	1	2		15	21		6	1	5
71	CXB-210-074	360	1	2		18	13	5	7	2	5
72	CXB-210-075	448	2	0	2	22	15	7	9	4	5
73	CXB-210-076	365	1	6		18	40		7	0	7
74	CXB-210-077	371	1	2		19	30		7	1	6
75	CXB-210-078	739	3	5		37	48		15	4	11
76	CXB-210-079	344	1	0	1	17	12	5	7	0	7
77	CXB-210-080	562	2	2	0	28	0	28	11	5	6
	Out of Blocks			11			109			23	
Camp 8E		34075	136	158	65	1704	1950	302	682	279	481

**Standard:** 1:250 People for Tube-well, 1:20 People for Latrine, 1:50 People for Bathing

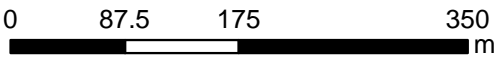


# WASH Sector Camp 8W Profile

Ukhia, Cox's Bazar, Bangladesh (May 8, 2018)

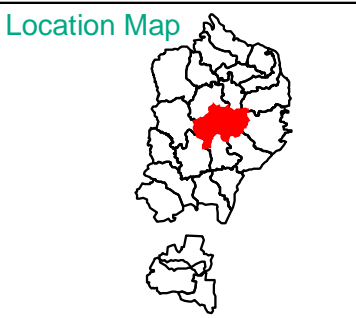
## Summary

This Profile provide an overview of Water, Sanitation & Hygiene (WASH) infrastructure within CAMP in Ukhia, Cox's Bazar. The GPS datasets was collected from partners upto May 08, 2018.



## Camp Overview

# of Majhee Blocks	64
# of Majhee Blocks Households	7,486
# of Majhee Blocks Population	31,343



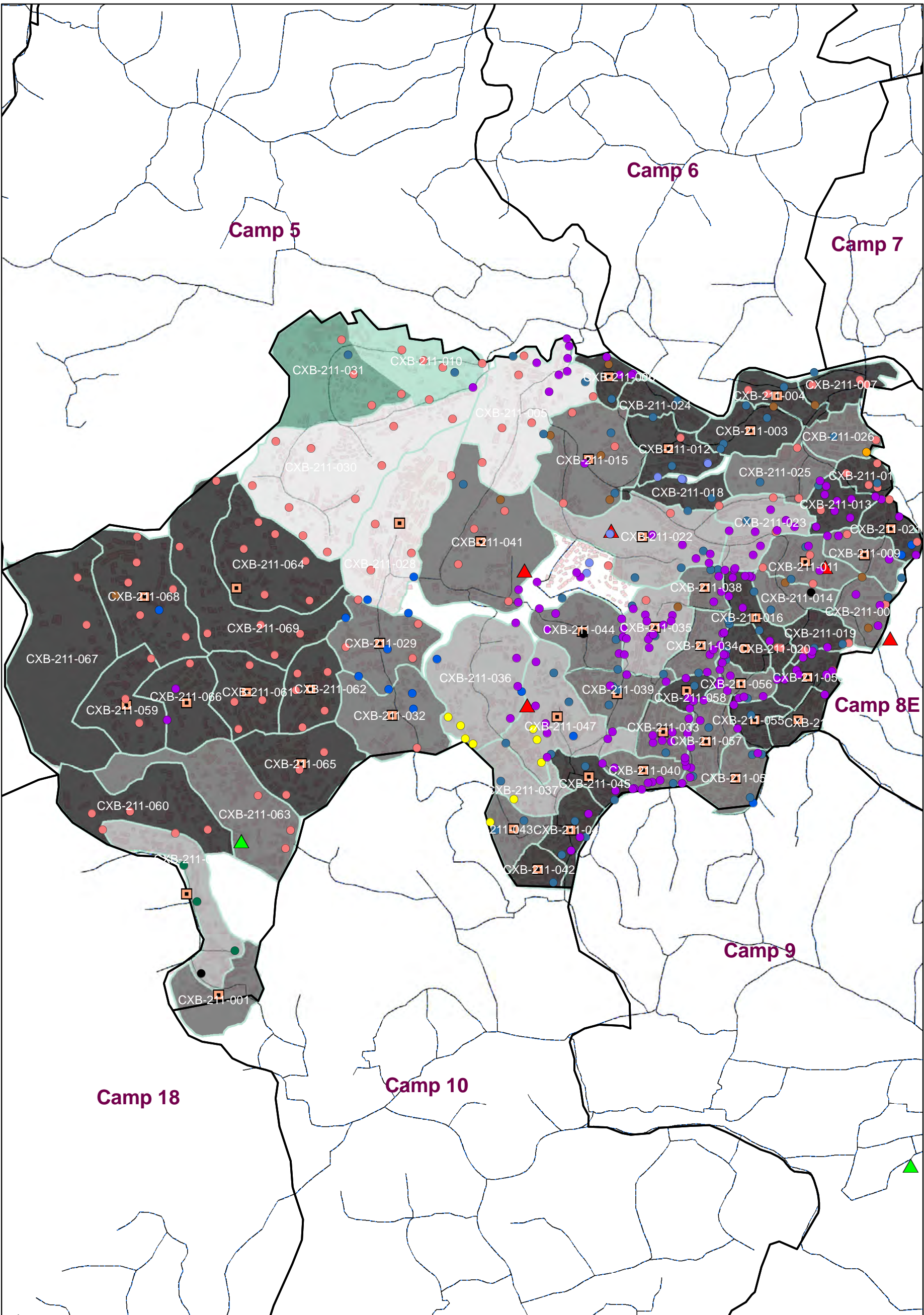
## Legend

- Agency Tube-wells
- ACF (2)
  - BRAC (16)
  - DPHE (162)
  - Friendship (12)
  - IOM (3)
  - MHI (11)
  - MSF (118)
  - OXFAM (9)
  - VERC (77)
  - WVI (3)
  - Proposed FSM Site (5)
  - Existing FSM Site (1)

- Bathing Count Per Block
- 1 - 25

- Latrine Count Per Block
- 1 - 25
  - 26 - 50
  - 51 - 75
  - 76 - 100
  - 101 - 125
  - 150 - 175

- Road
- Shelters
- Camp Boundary



Sl No	Block ID	Total Population	# TW Required	# TW Available	# TW GAP	# LT Required	# LT Available	# LT GAP	# Bathing Required	# Bathing Available	# Bathing GAP
1	CXB-211-001	558	2	0	2	28	43		11	5	6
2	CXB-211-002	412	2	6		21	57		8	8	0
3	CXB-211-003	260	1	5		13	17		5	3	2
4	CXB-211-004	303	1	3		15	24		6	3	3
5	CXB-211-005	553	2	16		28	96		11	0	11
6	CXB-211-006	284	1	6		14	11	3	6	3	3
7	CXB-211-007	489	2	4		24	15	9	10	0	10
8	CXB-211-008	416	2	8		21	29		8	0	8
9	CXB-211-009	528	2	4		26	35		11	3	8
10	CXB-211-010	724	3	6		36	103		14	0	14
11	CXB-211-011	466	2	7		23	39		9	3	6
12	CXB-211-012	486	2	6		24	18	6	10	3	7
13	CXB-211-013	277	1	10		14	19		6	0	6
14	CXB-211-014	404	2	3		20	45		8	0	8
15	CXB-211-015	516	2	9		26	46		10	9	1
16	CXB-211-016	423	2	15		21	15	6	8	4	4
17	CXB-211-017	245	1	6		12	17		5	0	5
18	CXB-211-018	585	2	1	1	29	23	6	12	0	12
19	CXB-211-019	349	1	5		17	18		7	0	7
20	CXB-211-020	383	2	3		19	15	4	8	3	5
21	CXB-211-021	328	1	7		16	15	1	7	3	4
22	CXB-211-022	687	3	14		34	67		14	13	1
23	CXB-211-023	561	2	12		28	54		11	0	11
24	CXB-211-024	280	1	1	0	14	14	0	6	0	6
25	CXB-211-025	456	2	3		23	28		9	0	9
26	CXB-211-026	502	2	4		25	32		10	0	10
27	CXB-211-028	1280	5	5	0	64	84		26	12	14
28	CXB-211-029	685	3	7		34	36		14	10	4
29	CXB-211-030	1483	6	11		74	91		30	0	30
30	CXB-211-031	1034	4	5		52	156		21	0	21
31	CXB-211-032	547	2	3		27	39		11	7	4
32	CXB-211-033	498	2	8		25	36		10	1	9
33	CXB-211-034	408	2	6		20	45		8	4	4
34	CXB-211-035	429	2	19		21	72		9	4	5
35	CXB-211-036	418	2	10		21	75		8	0	8
36	CXB-211-037	506	2	3		25	58		10	0	10
37	CXB-211-038	430	2	5		22	27		9	3	6
38	CXB-211-039	584	2	8		29	44		12	2	10
39	CXB-211-040	570	2	10		29	27	2	11	1	10
40	CXB-211-041	535	2	8		27	41		11	13	
41	CXB-211-042	365	1	1	0	18	21		7	4	3
42	CXB-211-043	414	2	3		21	41		8	2	6
43	CXB-211-044	588	2	7		29	35		12	3	9
44	CXB-211-045	512	2	4		26	22	4	10	5	5
45	CXB-211-046	574	2	5		29	23	6	11	3	8
46	CXB-211-047	447	2	12		22	74		9	10	
47	CXB-211-052	565	2	5		28	46		11	5	6
48	CXB-211-053	411	2	10		21	20	1	8	8	0
49	CXB-211-054	273	1	1	0	14	6	8	5	6	
50	CXB-211-055	352	1	3		18	22		7	2	5
51	CXB-211-056	436	2	13		22	29		9	1	8
52	CXB-211-057	260	1	10		13	32		5	3	2
53	CXB-211-058	260	1	5		13	11	2	5	1	4

**Standard:** 1:250 People for Tube-well, 1:20 People for Latrine, 1:50 People for Bathing



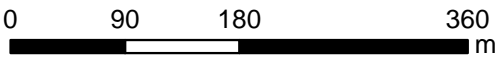
SI No	Block ID	Total Population	# TW Required	# TW Available	# TW GAP	# LT Required	# LT Available	# LT GAP	# Bathing Required	# Bathing Available	# Bathing GAP
54	CXB-211-059	581	2	3		29	13	16	12	5	7
55	CXB-211-060	391	2	3		20	21		8	0	8
56	CXB-211-061	406	2	5		20	6	14	8	15	
57	CXB-211-062	438	2	5		22	5	17	9	1	8
58	CXB-211-063	434	2	3		22	35		9	0	9
59	CXB-211-064	414	2	6		21	25		8	0	8
60	CXB-211-065	368	1	3		18	13	5	7	2	5
61	CXB-211-066	448	2	3		22	13	9	9	3	6
62	CXB-211-067	578	2	2	0	29	9	20	12	0	12
63	CXB-211-068	480	2	8		24	21	3	10	6	4
64	CXB-211-069	466	2	7		23	16	7	9	1	8
	Out of Blocks			14			39			7	
Camp 8W		31343	125	413	5	1567	2324	150	627	213	432

# WASH Sector Camp 14 Profile

Ukhia, Cox's Bazar, Bangladesh (May 8, 2018)

## Summary

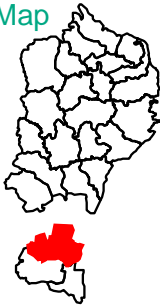
This Profile provide an overview of Water, Sanitation & Hygiene (WASH) infrastructure within CAMP in Ukhia, Cox's Bazar. The GPS datasets was collected from partners upto May 08, 2018.



## Camp Overview

# of Majhee Blocks	41
# of Majhee Blocks Households	6,806
# of Majhee Blocks Population	28,792

Location Map



## Legend

### Agency Tube-wells

- BRAC (119)
- DPHE (153)
- Proposed FSM Site (1)
- Existing FSM Site (2)

### Bathing Count Per Block

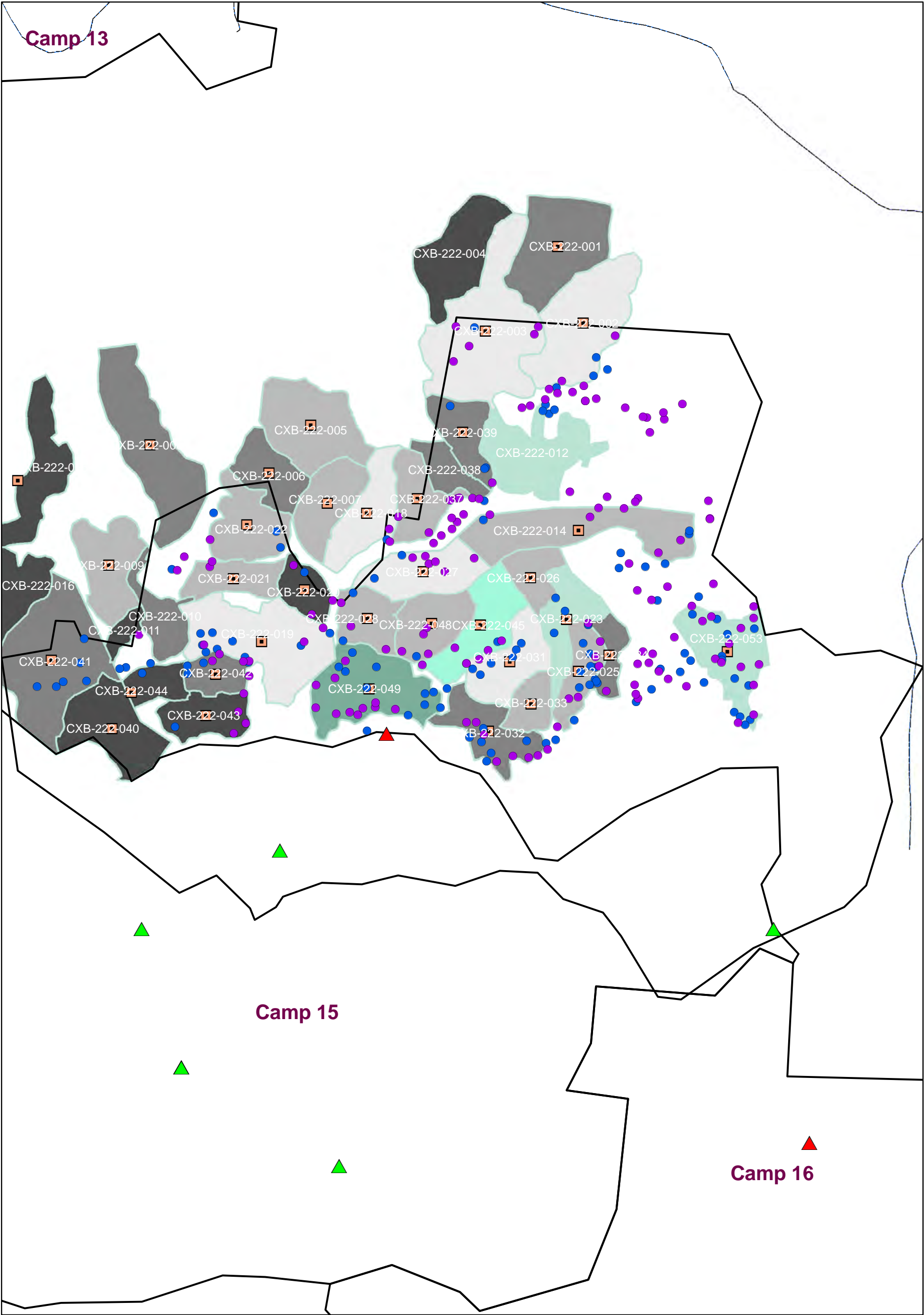
- 1 - 25

### Latrine Count Per Block

- 1 - 25
- 26 - 50
- 51 - 75
- 76 - 100
- 101 - 125
- 126 - 150
- 150 - 175

Road

Camp Boundary





Sl No	Block ID	Total Population	# TW Required	# TW Available	# TW GAP	# LT Required	# LT Available	# LT GAP	# Bathing Required	# Bathing Available	# Bathing GAP
1	CXB-222-001	810	3	6		41	49		16	5	11
2	CXB-222-002	871	3	17		44	77		17	8	9
3	CXB-222-003	1028	4	14		51	95		21	9	12
4	CXB-222-004	710	3	4		36	21	15	14	0	14
5	CXB-222-005	915	4	8		46	63		18	1	17
6	CXB-222-006	505	2	4		25	38		10	5	5
7	CXB-222-007	620	2	6		31	67		12	13	
8	CXB-222-008	632	3	4		32	43		13	5	8
9	CXB-222-009	690	3	3	0	35	54		14	3	11
10	CXB-222-010	632	3	0	3	32	26	6	13	0	13
11	CXB-222-011	268	1	0	1	13	8	5	5	0	5
12	CXB-222-012	575	2	2	0	29	118		12	0	12
13	CXB-222-014	686	3	9		34	68		14	3	11
14	CXB-222-016	560	2	4		28	21	7	11	11	0
15	CXB-222-018	663	3	1	2	33	78		13	1	12
16	CXB-222-019	968	4	14		48	88		19	12	7
17	CXB-222-020	610	2	4		31	24	7	12	4	8
18	CXB-222-021	425	2	2	0	21	53		9	1	8
19	CXB-222-022	559	2	3		28	60		11	4	7
20	CXB-222-023	695	3	3	0	35	103		14	7	7
21	CXB-222-024	645	3	6		32	40		13	8	5
22	CXB-222-025	839	3	12		42	61		17	10	7
23	CXB-222-026	638	3	0	3	32	58		13	4	9
24	CXB-222-027	635	3	8		32	82		13	5	8
25	CXB-222-028	625	3	5		31	74		13	6	7
26	CXB-222-031	723	3	7		36	97		14	8	6
27	CXB-222-032	707	3	11		35	42		14	9	5
28	CXB-222-033	610	2	0	2	31	51		12	1	11
29	CXB-222-037	900	4	6		45	57		18	2	16
30	CXB-222-038	519	2	0	2	26	40		10	0	10
31	CXB-222-039	488	2	6		24	44		10	3	7
32	CXB-222-040	675	3	0	3	34	14	20	14	1	13
33	CXB-222-041	944	4	8		47	30	17	19	10	9
34	CXB-222-042	410	2	6		21	26		8	6	2
35	CXB-222-043	392	2	5		20	8	12	8	4	4
36	CXB-222-044	960	4	1	3	48	13	35	19	3	16
37	CXB-222-045	1096	4	8		55	135		22	6	16
38	CXB-222-048	650	3	5		33	72		13	7	6
39	CXB-222-049	795	3	21		40	168		16	12	4
40	CXB-222-053	1379	6	22		69	119		28	18	10
41	CXB-222-055	740	3	0	3	37	3	34	15	3	12
	Out of Blocks			95			421			61	
	Camp 14	28792	115	340	20	1440	2809	157	576	279	358

**Standard:** 1:250 People for Tube-well, 1:20 People for Latrine, 1:50 People for Bathing

## Ukhia, Cox's Bazar, Bangladesh (May 8, 2018)



INTER SECTOR  
COORDINATION  
GROUP

This Profile provide an overview of Water, Sanitation & Hygiene (WASH) infrastructure within CAMP in Ukhia, Cox's Bazar. The GPS datasets was collected from partners upto May 08, 2018.



# of Majhee Blocks	89
# of Majhee Blocks Households	10,152
# of Majhee Blocks Population	46,196



## Camp 16

Agency Tube-wells

- BRAC (123)
- DPHE (77)
- DSK (9)
- SI (9)
- WVI (13)
- WaterAid (1)

Proposed  
FSM Site (3)

Existing  
FSM Site (8)

1 - 25

- 1 - 25
- 26 - 50

 Camp Boundary



Sl No	Block ID	Total Population	# TW Required	# TW Available	# TW GAP	# LT Required	# LT Available	# LT GAP	# Bathing Required	# Bathing Available	# Bathing GAP
1	CXB-223-001	693	3	1	2	35	18	17	14	0	14
2	CXB-223-002	513	2	0	2	26	37		10	0	10
3	CXB-223-003	461	2	0	2	23	34		9	11	
4	CXB-223-004	321	1	0	1	16	19		6	7	
5	CXB-223-005	367	1	0	1	18	23		7	1	6
6	CXB-223-006	460	2	3		23	34		9	5	4
7	CXB-223-007	350	1	1	0	18	25		7	13	
8	CXB-223-008	443	2	0	2	22	46		9	1	8
9	CXB-223-009	473	2	0	2	24	27		9	0	9
10	CXB-223-010	471	2	2	0	24	46		9	12	
11	CXB-223-011	672	3	3	0	34	36		13	6	7
12	CXB-223-012	555	2	5		28	9	19	11	6	5
13	CXB-223-013	613	2	1	1	31	9	22	12	5	7
14	CXB-223-014	485	2	0	2	24	5	19	10	1	9
15	CXB-223-015	646	3	1	2	32	7	25	13	1	12
16	CXB-223-016	526	2	1	1	26	11	15	11	1	10
17	CXB-223-017	575	2	3		29	10	19	12	4	8
18	CXB-223-018	487	2	1	1	24	5	19	10	0	10
19	CXB-223-019	561	2	4		28	31		11	4	7
20	CXB-223-020	450	2	0	2	23	6	17	9	0	9
21	CXB-223-021	672	3	3	0	34	7	27	13	2	11
22	CXB-223-022	575	2	4		29	13	16	12	1	11
23	CXB-223-023	550	2	2	0	28	32		11	11	0
24	CXB-223-024	472	2	0	2	24	14	10	9	12	
25	CXB-223-025	531	2	3		27	13	14	11	8	3
26	CXB-223-026	435	2	5		22	22	0	9	18	
27	CXB-223-027	499	2	0	2	25	45		10	21	
28	CXB-223-028	693	3	1	2	35	25	10	14	8	6
29	CXB-223-029	580	2	2	0	29	27	2	12	11	1
30	CXB-223-030	467	2	0	2	23	22	1	9	5	4
31	CXB-223-031	692	3	0	3	35	10	25	14	0	14
32	CXB-223-032	772	3	3	0	39	2	37	15	3	12
33	CXB-223-033	610	2	1	1	31	5	26	12	0	12
34	CXB-223-034	448	2	0	2	22	0	22	9	0	9
35	CXB-223-035	242	1	4		12	0	12	5	0	5
36	CXB-223-036	655	3	9		33	11	22	13	1	12
37	CXB-223-037	375	2	0	2	19	0	19	8	0	8
38	CXB-223-038	510	2	14		26	4	22	10	0	10
39	CXB-223-039	510	2	1	1	26	4	22	10	0	10
40	CXB-223-040	575	2	3		29	20	9	12	2	10
41	CXB-223-041	477	2	2	0	24	23	1	10	2	8
42	CXB-223-042	397	2	1	1	20	28		8	2	6
43	CXB-223-043	450	2	2	0	23	27		9	2	7
44	CXB-223-044	490	2	2	0	25	11	14	10	8	2
45	CXB-223-045	450	2	2	0	23	19	4	9	1	8
46	CXB-223-046	465	2	0	2	23	9	14	9	0	9
47	CXB-223-047	418	2	2	0	21	13	8	8	0	8
48	CXB-223-048	435	2	1	1	22	16	6	9	2	7
49	CXB-223-049	520	2	2	0	26	17	9	10	2	8
50	CXB-223-050	482	2	0	2	24	23	1	10	1	9
51	CXB-223-051	475	2	1	1	24	8	16	10	3	7
52	CXB-223-052	397	2	1	1	20	24		8	0	8
53	CXB-223-053	436	2	1	1	22	23		9	0	9

**Standard:** 1:250 People for Tube-well, 1:20 People for Latrine, 1:50 People for Bathing

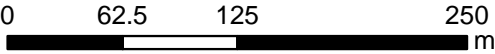
SI No	Block ID	Total Population	# TW Required	# TW Available	# TW GAP	# LT Required	# LT Available	# LT GAP	# Bathing Required	# Bathing Available	# Bathing GAP
54	CXB-223-054	536	2	2	0	27	30		11	7	4
55	CXB-223-055	498	2	2	0	25	21	4	10	5	5
56	CXB-223-056	460	2	8		23	12	11	9	2	7
57	CXB-223-057	520	2	0	2	26	34		10	5	5
58	CXB-223-058	445	2	1	1	22	12	10	9	3	6
59	CXB-223-059	519	2	5		26	16	10	10	3	7
60	CXB-223-060	502	2	3		25	26		10	11	
61	CXB-223-061	317	1	5		16	21		6	6	0
62	CXB-223-062	450	2	0	2	23	11	12	9	4	5
63	CXB-223-063	711	3	3	0	36	45		14	15	
64	CXB-223-064	305	1	2		15	23		6	2	4
65	CXB-223-065	419	2	1	1	21	29		8	2	6
66	CXB-223-066	584	2	1	1	29	24	5	12	2	10
67	CXB-223-067	577	2	0	2	29	47		12	14	
68	CXB-223-068	417	2	1	1	21	16	5	8	5	3
69	CXB-223-069	563	2	4		28	11	17	11	4	7
70	CXB-223-070	675	3	3	0	34	39		14	7	7
71	CXB-223-071	482	2	2	0	24	30		10	0	10
72	CXB-223-072	381	2	0	2	19	32		8	2	6
73	CXB-223-073	510	2	5		26	35		10	13	
74	CXB-223-074	730	3	1	2	37	42		15	4	11
75	CXB-223-075	445	2	2	0	22	10	12	9	1	8
76	CXB-223-076	502	2	4		25	17	8	10	0	10
77	CXB-223-077	565	2	0	2	28	0	28	11	2	9
78	CXB-223-078	418	2	6		21	5	16	8	0	8
79	CXB-223-079	633	3	2	1	32	21	11	13	1	12
80	CXB-223-080	408	2	10		20	10	10	8	2	6
81	CXB-223-081	765	3	0	3	38	26	12	15	1	14
82	CXB-223-082	350	1	5		18	2	16	7	0	7
83	CXB-223-083	454	2	0	2	23	15	8	9	1	8
84	CXB-223-084	513	2	0	2	26	10	16	10	8	2
85	CXB-223-085	666	3	0	3	33	24	9	13	0	13
86	CXB-223-086	443	2	0	2	22	4	18	9	7	2
87	CXB-223-087	795	3	14		40	20	20	16	1	15
88	CXB-223-088	973	4	0	4	49	5	44	19	0	19
89	CXB-223-089	788	3	2	1	39	10	29	16	0	16
	Out of Blocks			40			198			44	
Camp 15		46196	185	232	75	2310	1888	866	924	388	621

**Standard:** 1:250 People for Tube-well, 1:20 People for Latrine, 1:50 People for Bathing



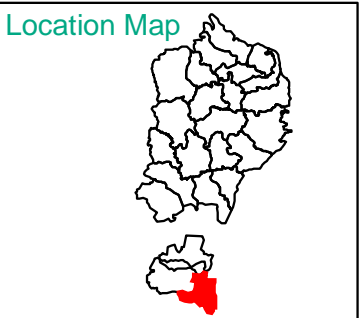
## Summary

This Profile provide an overview of Water, Sanitation & Hygiene (WASH) infrastructure within CAMP in Ukhia, Cox's Bazar. The GPS datasets was collected from partners upto May 08, 2018.



## Camp Overview

# of Majhee Blocks	47
# of Majhee Blocks Households	4,937
# of Majhee Blocks Population	22,076



## Legend

- Agency Tube-wells
- Agrajattra (3)
  - BRAC (71)
  - CARE (18)
  - DSK (93)
  - Proposed FSM Site (3)

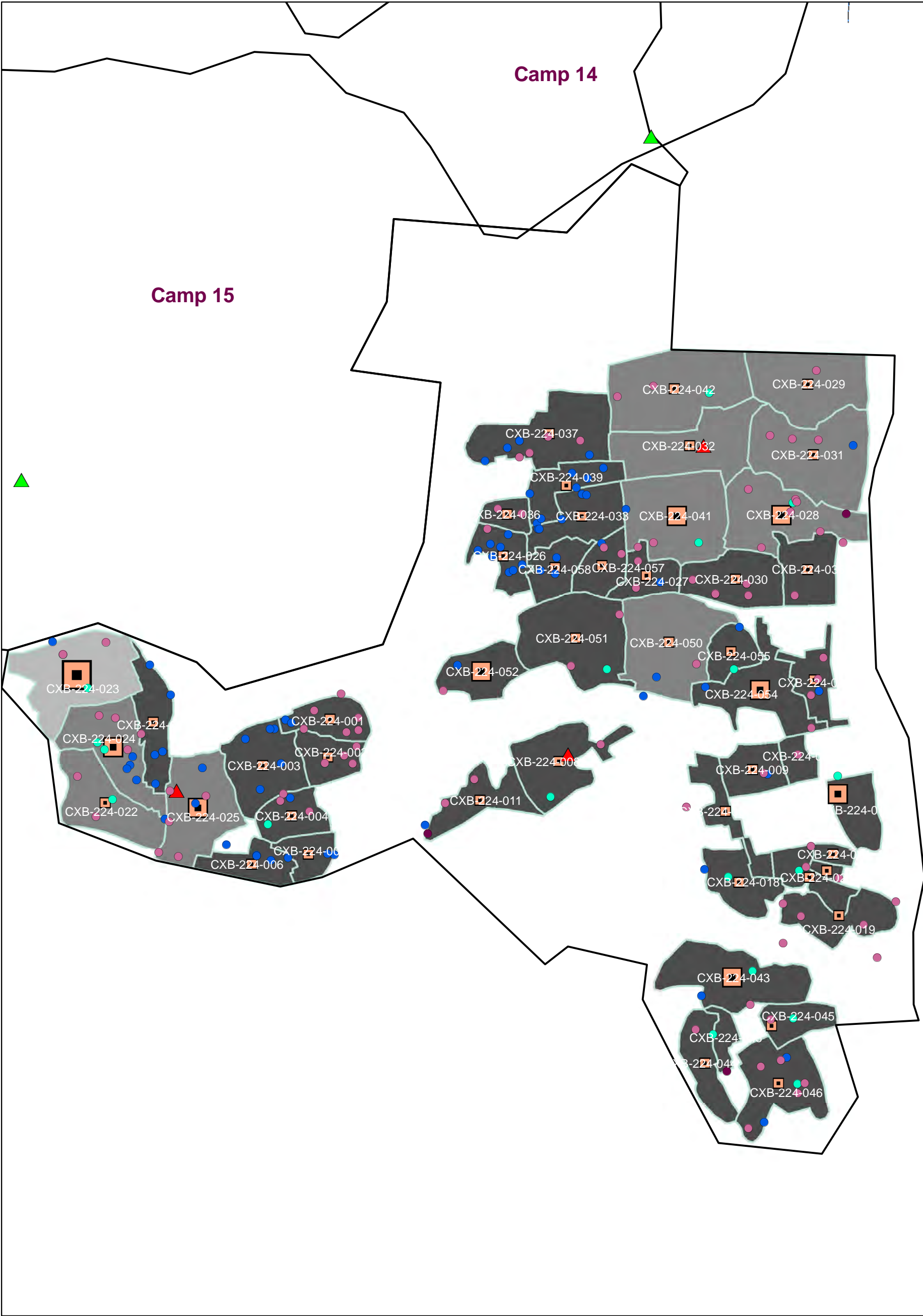
### Bathing Count Per Block

- 1 - 25
- 26 - 50
- 51 - 75

### Latrine Count Per Block

- 1 - 25
- 26 - 50
- 51 - 75

Camp Boundary



Sl No	Block ID	Total Population	# TW Required	# TW Available	# TW GAP	# LT Required	# LT Available	# LT GAP	# Bathing Required	# Bathing Available	# Bathing GAP
1	CXB-224-001	419	2	6		21	9	12	8	5	3
2	CXB-224-002	484	2	5		24	7	17	10	9	1
3	CXB-224-003	715	3	5		36	6	30	14	10	4
4	CXB-224-004	424	2	5		21	16	5	8	11	
5	CXB-224-005	422	2	1	1	21	7	14	8	13	
6	CXB-224-006	245	1	4		12	14		5	15	
7	CXB-224-007	455	2	0	2	23	20	3	9	8	1
8	CXB-224-008	708	3	2	1	35	17	18	14	18	
9	CXB-224-009	361	1	2		18	12	6	7	19	
10	CXB-224-010	405	2	1	1	20	12	8	8	31	
11	CXB-224-011	395	2	3		20	18	2	8	12	
12	CXB-224-013	187	1	1	0	9	3	6	4	2	2
13	CXB-224-014	184	1	0	1	9	2	7	4	3	1
14	CXB-224-018	355	1	1	0	18	14	4	7	5	2
15	CXB-224-019	707	3	3	0	35	7	28	14	13	1
16	CXB-224-020	470	2	3		24	12	12	9	6	3
17	CXB-224-021	464	2	5		23	16	7	9	17	
18	CXB-224-022	474	2	4		24	30		9	18	
19	CXB-224-023	487	2	5		24	51		10	55	
20	CXB-224-024	552	2	10		28	44		11	47	
21	CXB-224-025	650	3	7		33	40		13	38	
22	CXB-224-026	440	2	8		22	8	14	9	18	
23	CXB-224-027	328	1	4		16	12	4	7	19	
24	CXB-224-028	911	4	8		46	39	7	18	32	
25	CXB-224-029	297	1	1	0	15	35		6	19	
26	CXB-224-030	496	2	7		25	24	1	10	22	
27	CXB-224-031	435	2	4		22	28		9	24	
28	CXB-224-032	478	2	0	2	24	30		10	16	
29	CXB-224-033	405	2	5		20	17	3	8	25	
30	CXB-224-035	438	2	1	1	22	11	11	9	13	
31	CXB-224-036	450	2	2	0	23	1	22	9	7	2
32	CXB-224-037	624	2	8		31	13	18	12	21	
33	CXB-224-039	497	2	7		25	12	13	10	14	
34	CXB-224-041	521	2	3		26	38		10	31	
35	CXB-224-042	432	2	3		22	40		9	19	
36	CXB-224-043	581	2	2	0	29	24	5	12	32	
37	CXB-224-044	461	2	2	0	23	13	10	9	16	
38	CXB-224-045	436	2	2	0	22	20	2	9	17	
39	CXB-224-046	350	1	8		18	23		7	24	
40	CXB-224-050	735	3	2	1	37	35	2	15	21	
41	CXB-224-051	649	3	3	0	32	15	17	13	22	
42	CXB-224-052	301	1	2		15	13	2	6	28	
43	CXB-224-053	325	1	4		16	6	10	7	6	1
44	CXB-224-054	779	3	3	0	39	24	15	16	30	
45	CXB-224-055	530	2	1	1	27	7	20	11	11	0
46	CXB-224-057	389	2	3		19	10	9	8	12	
47	CXB-224-058	225	1	3		11	17		5	11	
	Out of Blocks			16			184			96	
Camp 16		22076	88	185	9	1104	1056	365	442	961	21

**Standard:** 1:250 People for Tube-well, 1:20 People for Latrine, 1:50 People for Bathing



## Summary

This Profile provide an overview of Water, Sanitation & Hygiene (WASH) infrastructure within CAMP in Ukhia, Cox's Bazar. The GPS datasets was collected from partners upto May 08, 2018.

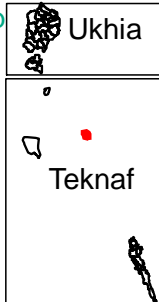
050100200

m

## Camp Overview

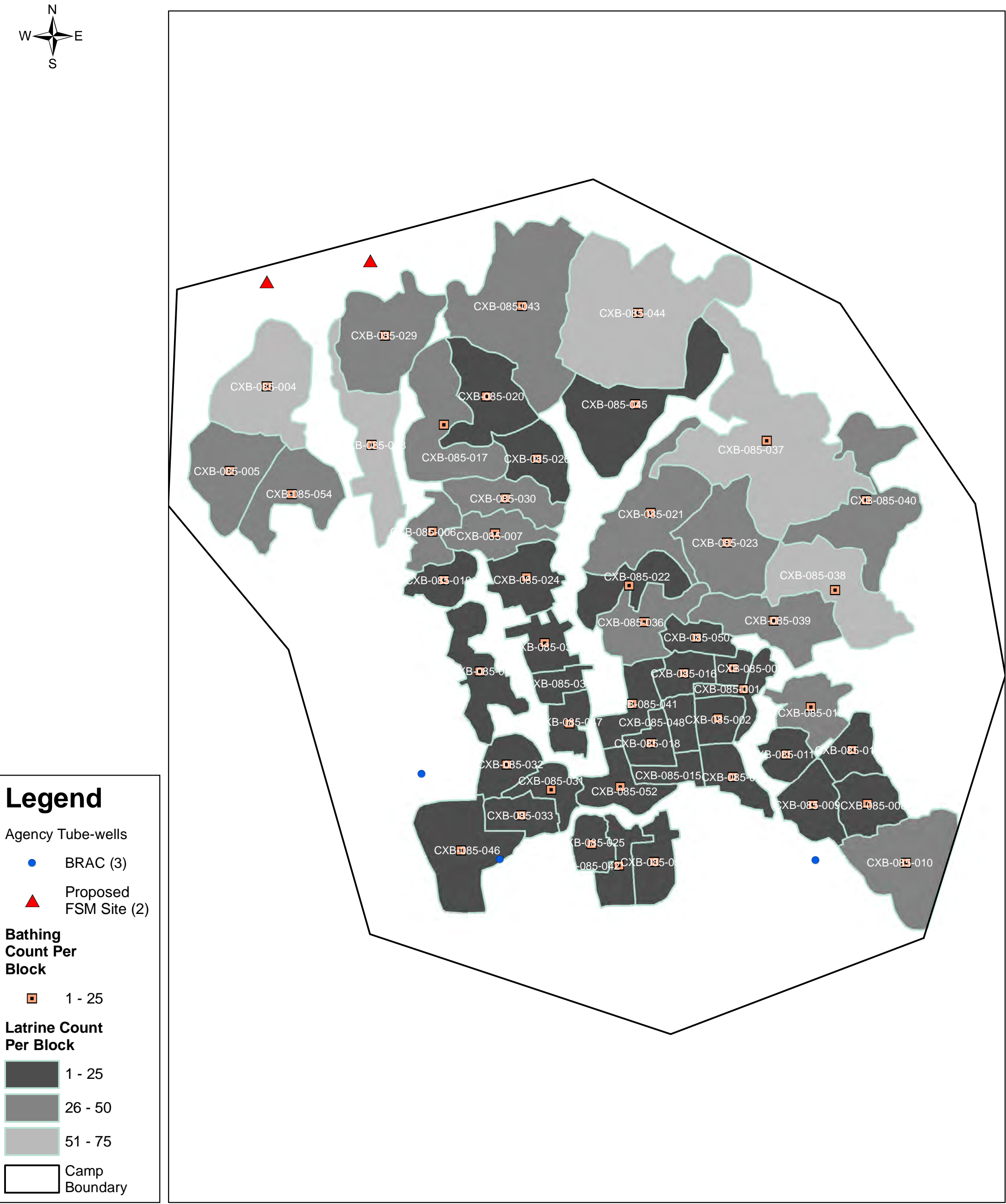
# of Majhee Blocks	52
# of Majhee Blocks Households	4,624
# of Majhee Blocks Population	22,064

### Location Map



Ukhia

Teknaf



Sl No	Block ID	Total Population	# TW Required	# TW Available	# TW GAP	# LT Required	# LT Available	# LT GAP	# Bathing Required	# Bathing Available	# Bathing GAP
1	CXB-085-001	452	2	0	2	23	13	10	9	3	6
2	CXB-085-002	434	2	0	2	22	5	17	9	5	4
3	CXB-085-003	205	1	0	1	10	4	6	4	5	
4	CXB-085-004	435	2	0	2	22	57		9	4	5
5	CXB-085-005	450	2	0	2	23	27		9	2	7
6	CXB-085-006	390	2	0	2	20	30		8	3	5
7	CXB-085-007	187	1	0	1	9	36		4	1	3
8	CXB-085-008	430	2	0	2	22	22		9	11	
9	CXB-085-009	450	2	0	2	23	11	12	9	12	
10	CXB-085-010	502	2	0	2	25	33		10	12	
11	CXB-085-011	474	2	0	2	24	10	14	9	4	5
12	CXB-085-012	439	2	0	2	22	14	8	9	4	5
13	CXB-085-013	489	2	0	2	24	30		10	7	3
14	CXB-085-014	512	2	0	2	26	6	20	10	2	8
15	CXB-085-015	348	1	0	1	17	4	13	7	0	7
16	CXB-085-016	666	3	0	3	33	9	24	13	8	5
17	CXB-085-017	440	2	0	2	22	35		9	9	0
18	CXB-085-018	301	1	0	1	15	3	12	6	4	2
19	CXB-085-019	252	1	0	1	13	20		5	3	2
20	CXB-085-020	350	1	0	1	18	23		7	5	2
21	CXB-085-021	480	2	0	2	24	47		10	8	2
22	CXB-085-022	446	2	0	2	22	24		9	8	1
23	CXB-085-023	495	2	0	2	25	41		10	7	3
24	CXB-085-024	360	1	0	1	18	25		7	1	6
25	CXB-085-025	400	2	0	2	20	3	17	8	6	2
26	CXB-085-026	330	1	0	1	17	23		7	2	5
27	CXB-085-028	450	2	0	2	23	59		9	10	
28	CXB-085-029	410	2	0	2	21	28		8	3	5
29	CXB-085-030	384	2	0	2	19	31		8	1	7
30	CXB-085-031	418	2	0	2	21	11	10	8	4	4
31	CXB-085-032	417	2	0	2	21	18	3	8	5	3
32	CXB-085-033	494	2	0	2	25	13	12	10	3	7
33	CXB-085-034	364	1	0	1	18	13	5	7	0	7
34	CXB-085-035	459	2	0	2	23	11	12	9	1	8
35	CXB-085-036	451	2	0	2	23	48		9	7	2
36	CXB-085-037	664	3	0	3	33	63		13	17	
37	CXB-085-038	532	2	0	2	27	69		11	16	
38	CXB-085-039	443	2	0	2	22	49		9	10	
39	CXB-085-040	451	2	0	2	23	40		9	6	3
40	CXB-085-041	357	1	0	1	18	6	12	7	6	1
41	CXB-085-042	502	2	0	2	25	13	12	10	6	4
42	CXB-085-043	443	2	0	2	22	34		9	8	1
43	CXB-085-044	320	1	0	1	16	55		6	6	0
44	CXB-085-045	477	2	0	2	24	21	3	10	3	7
45	CXB-085-046	515	2	1	1	26	24	2	10	11	
46	CXB-085-047	285	1	0	1	14	4	10	6	4	2
47	CXB-085-048	459	2	0	2	23	5	18	9	0	9
48	CXB-085-049	445	2	0	2	22	13	9	9	4	5
49	CXB-085-050	333	1	0	1	17	10	7	7	5	2
50	CXB-085-052	445	2	0	2	22	13	9	9	7	2
51	CXB-085-053	421	2	0	2	21	11	10	8	8	0
52	CXB-085-054	408	2	0	2	20	43		8	3	5
	Out of Blocks			2			198			52	
Unchiprang		22064	88	3	87	1103	1458	286	441	342	171